

# Antropometri posisi duduk

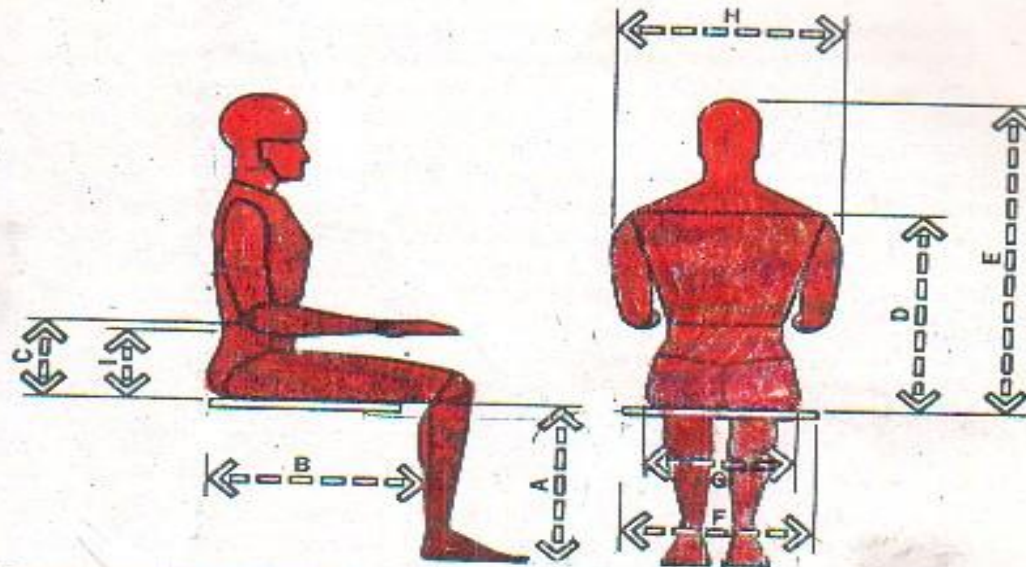


Figure 4-4. Key anthropometric dimensions required for chair design.

MEASUREMENT	MEN				WOMEN			
	Percentile		Percentile		Percentile		Percentile	
	5	95	5	95	5	95	5	95
A Popliteal Height	15.5	39.4	19.3	49.0	14.0	35.6	17.5	44.5
B Buttock-Popliteal Length	17.3	43.9	21.6	54.9	17.0	43.2	21.0	53.3
C Elbow Rest Height	7.4	18.8	11.8	29.5	7.1	18.0	11.0	27.9
D Shoulder Height	21.0	53.3	25.0	63.5	18.0	45.7	25.0	63.5
E Sitting Height Normal	31.6	80.3	36.6	93.0	29.6	75.2	34.7	88.1
F Elbow-to-Elbow Breadth	13.7	34.8	19.9	50.5	12.3	31.2	19.3	49.0
G Hip Breadth	12.2	31.0	15.9	40.4	12.3	31.2	17.1	43.4
H Shoulder Breadth	17.0	43.2	19.0	48.3	13.0	33.0	19.0	48.3
I Lumbar Height	See Note.							

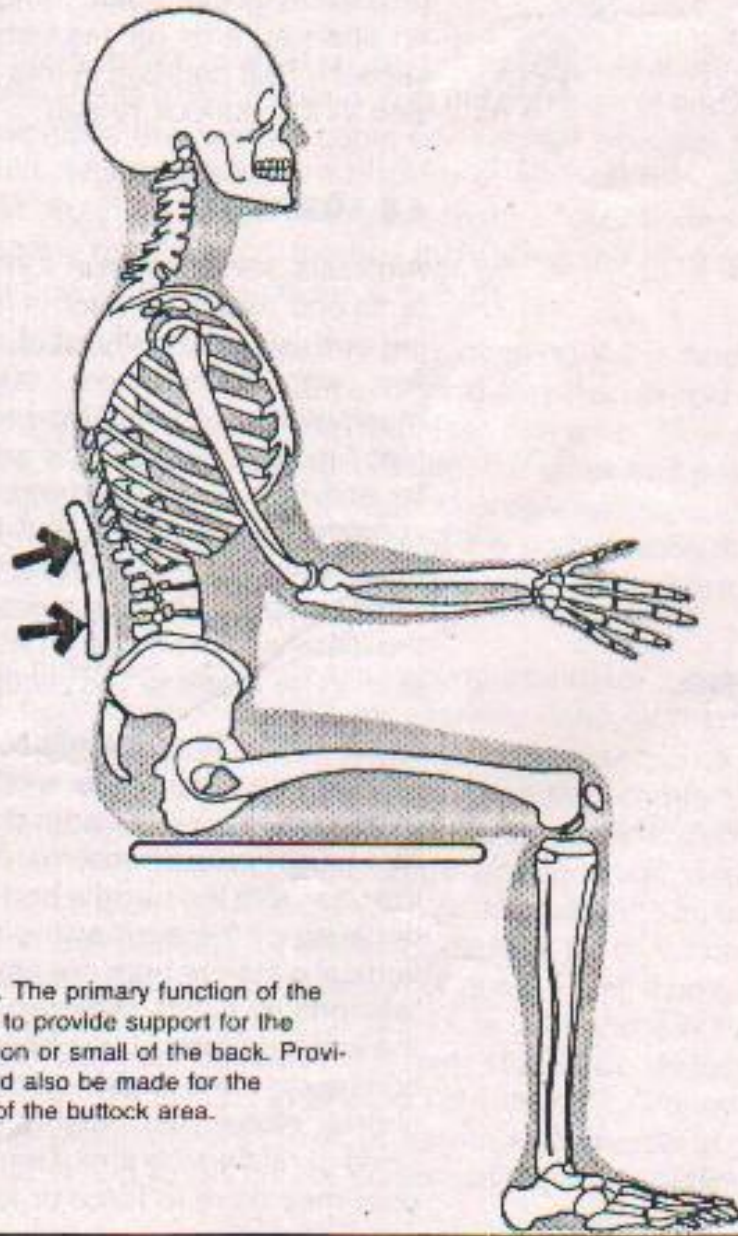
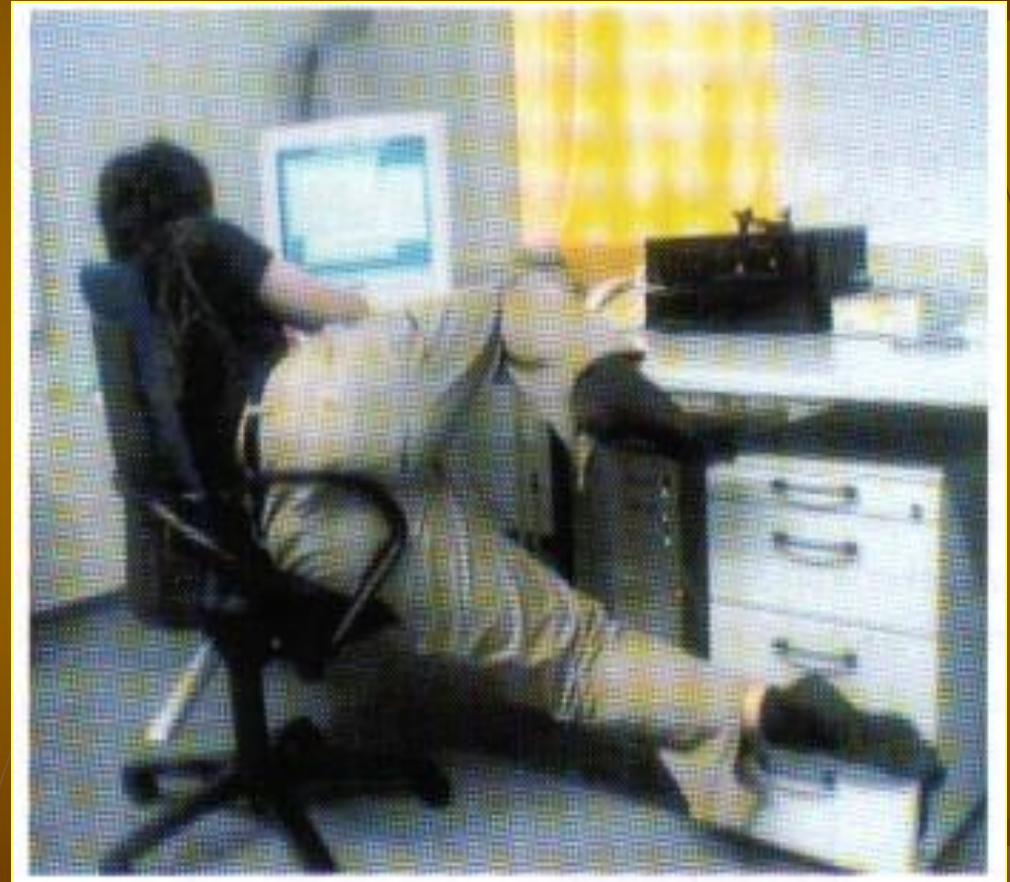


Figure 4-9. The primary function of the backrest is to provide support for the lumbar region or small of the back. Provisions should also be made for the protrusion of the buttock area.

# POSISI DUDUK YANG SALAH



# MEJA DAN KURSI MAKAN



# MEJA DAN KURSI TAMU



# SOFA RUANG KELUARGA



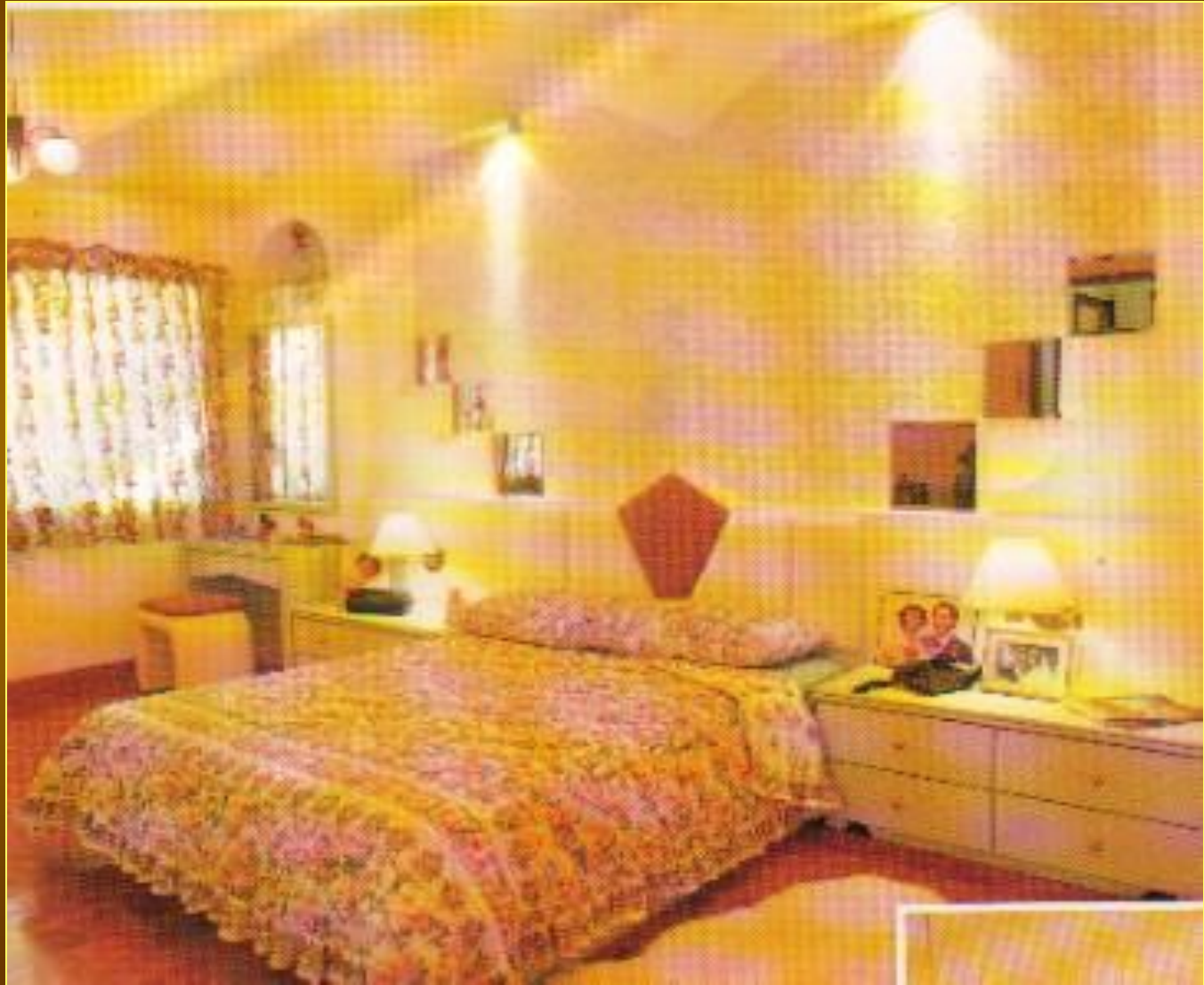
L'Esprit - your partner in style



# KURSI DAN MEJA BAR



# RUANG TIDUR UTAMA





# TEMPAT TIDUR GAYA COUNTRY

