

ADICTIVES AND PSYCOTROPICS

LEARNING OBJECTIVES:

The students are able to:

- 1. Determine the meaning of addictive and psychotropic substances**
- 2. Classify materials in daily life which include in addictive and psychotropic substances**
- 3. Identify the impact of addictive and psychotropic substances to health, social and economy**

Why do we have to learn about this?



It is based on fact that in the last 10 years the use of narcotic and dangerous drugs in the society is blossoming



So, what can we do to overcome this problems????

Addictive substances

- Substances which influence person's body whom use it and give addict effect

**MATIKAN ROKOK ANDA
SEKARANG !!**



**SEBELUM ROKOK MEMATIKAN ANDA
DAN ORANG DI SEKITAR ANDA**





Cigarettes

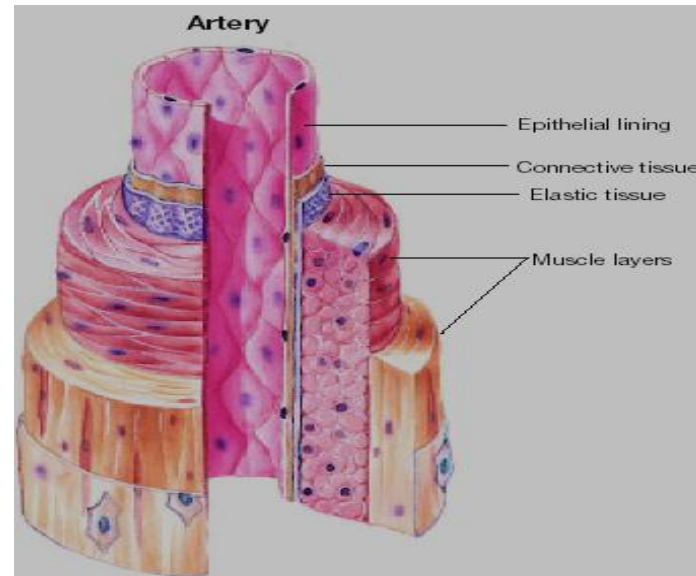
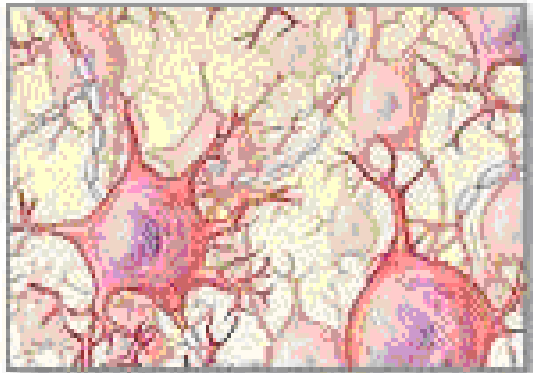
- Three main poison in cigarettes:
 - **Tar** → lungs cancer
 - **Nicotine** → addictive substances
 - **Carbon monoxide** → decrease oxygen supply

Smoking can cause lungs cancer, mouth cancer, larynx and pancreas cancer

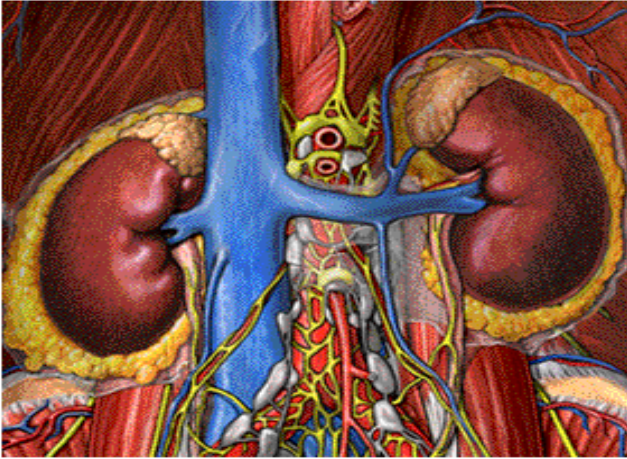
So,.....don't smoking!!!!

Alcoholic drinks

- In high concentration it can influence main nervous system



- It can cause heart disease because there are so many lipid in the artery and can cause blood vessels dilatation



Disturbance at the kidney function, which will cause dehydration

On mothers to be (pregnant woman) will cause mental disturbance



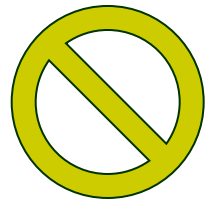


Symptoms of Alcoholism

someone abusing alcohol makes drinking a central activity of her life, displacing healthy activity and relationships, and resulting in negative consequences

Psychotropic substances

Certain drug that needed in medication, but it may cause addiction physically and psychically



Stimulant : amphetamine, cocaine

Depressant: barbiturate, alcohol, cannabis

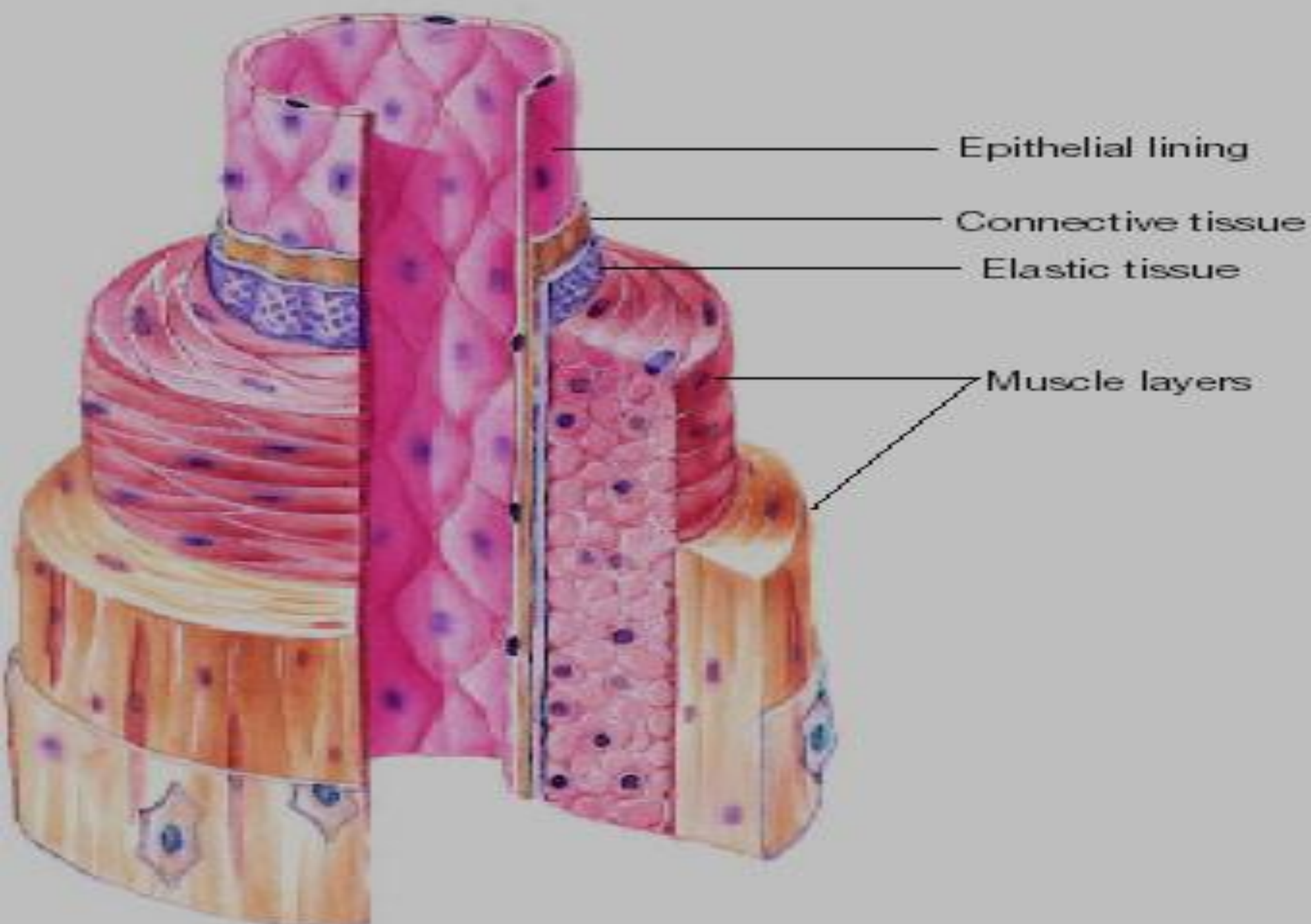
Hallucinogen: Marijuana



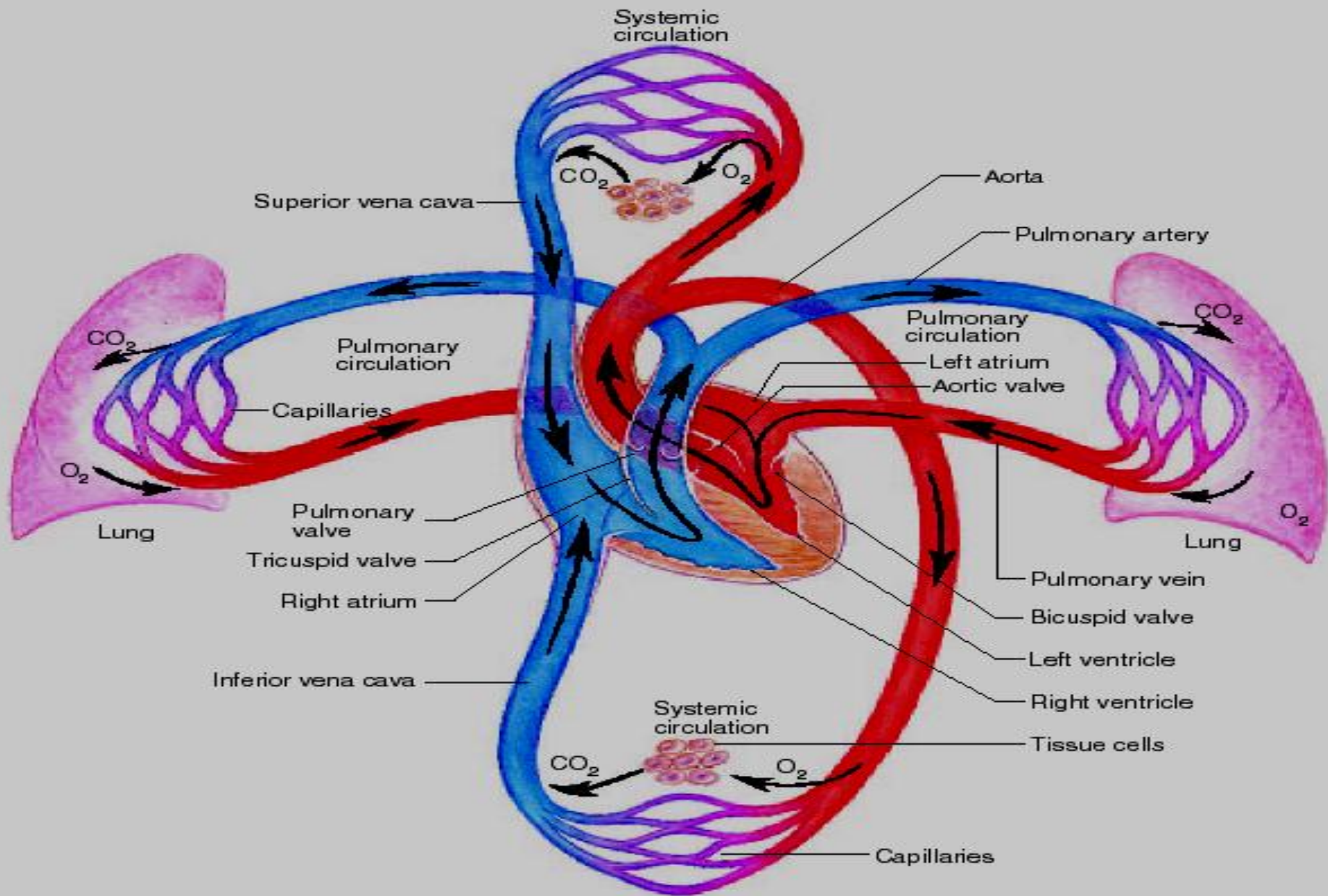
Side effect of psychotropic substances

- Narcotic → give the sensation, less in pain
- Barbiturate → tight sleep, death
- Cocaine → anesthesia, stimulate the nervous system
- Morphine → sleepy, uncontrolled happiness (euphoria), respiration disturbance

Artery

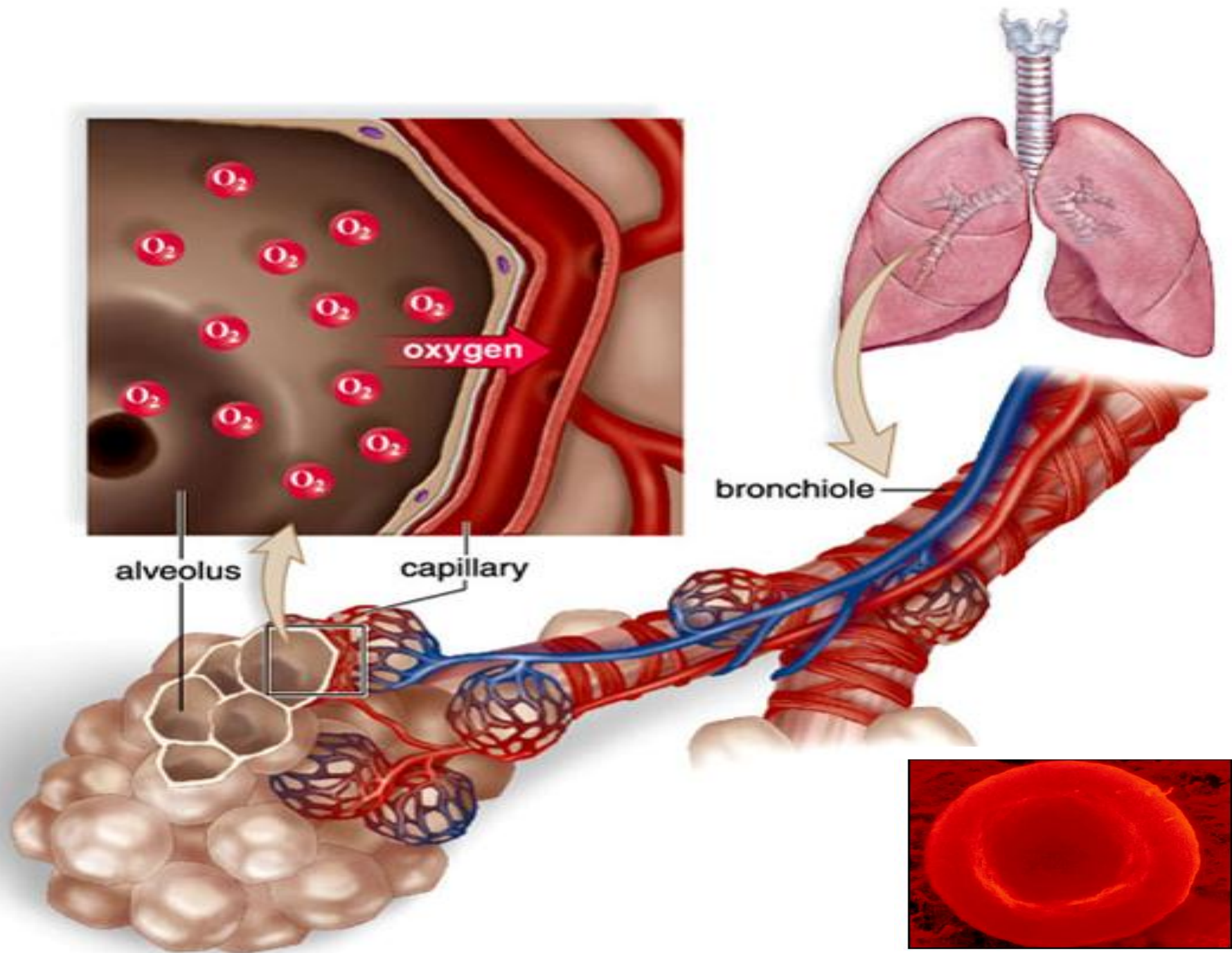


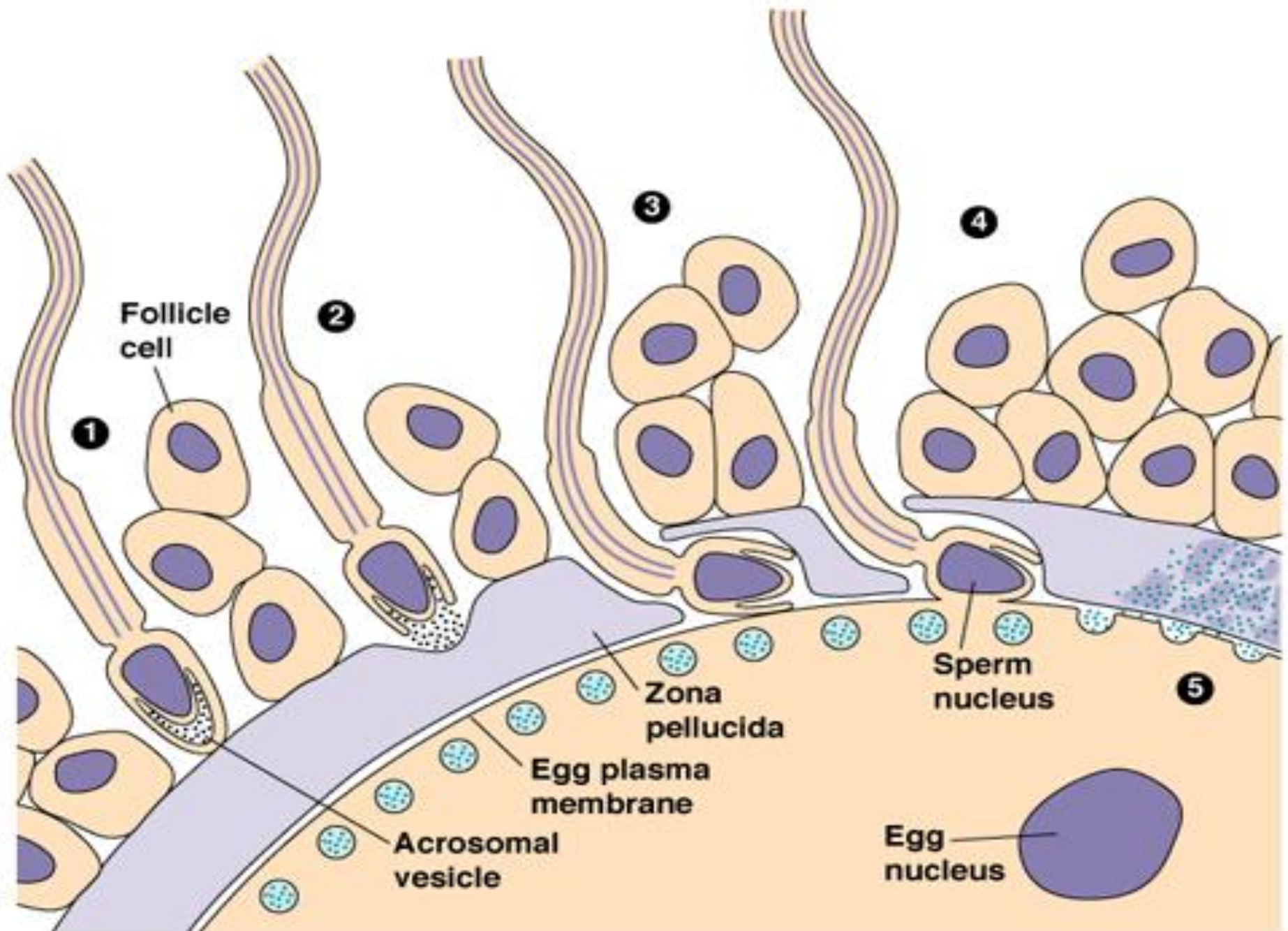




Blue indicates oxygen-poor blood

Red indicates oxygen-rich blood





What are your conclusions?

- Addictive substances
- Psychotropic substances
- Examples of addictive and psychotropic substances
- Impact of addictive and psychotropic substances to health, social and economy





Observe your social environment if there is someone addict to addictive substances, write down the characteristics of person that you observed !

THANK YOU, SEE YOU NEXT MEETING!!!